

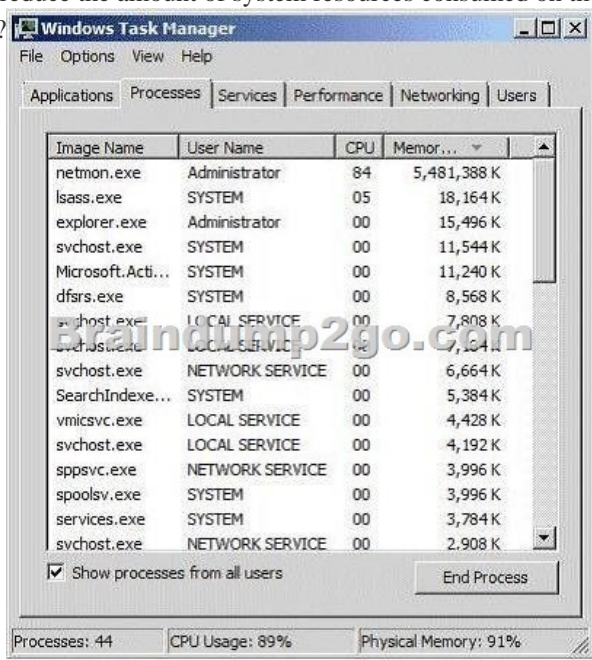
## Microsoft 70-642 Practice Exam Questions and Answers Sample Papers Shared By Braindump2go (421-430)

Try 2015 Latet Updated 70-642 Practice Exam Questions and Answers, Pass 70-642 Actual Test 100% in 2015 New Year! Braindump2go Latest released Free Sample 70-642 Exam Questions are shared for instant download! Braindump2go holds the confidence of 70-642 exam candiates with Microsoft Official Guaranteed 70-642 Exa Dumps Products! 448 New Updated Questions and Answers! 2015 Microsoft 70-642 100% Success! Vendor: Microsoft Exam Code: 70-642 Exam Name: TS: Windows Server 2008 Network Infrastructure, Configurin  
**Keywords: 70-642 Exam Dumps,70-642 Practice Tests,70-642 Practice Exams,70-642 Exam Questions,70-642 Dumps,70-642 PDF,70-642 VCE,70-642 Study Guide**

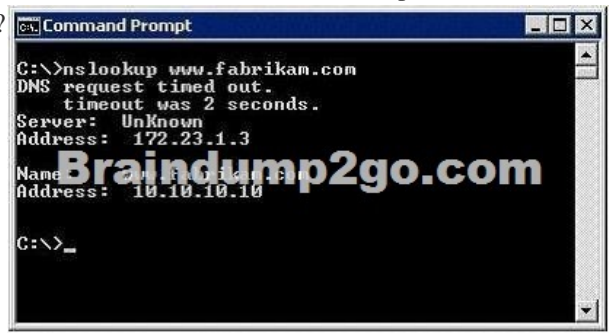
**Compared Before Buying Microsoft 70-642 PDF & V**

Pass4sure	Braindump2go	Te
	<b>100% Pass OR Money Back</b>	
<b>Not In Stock</b>	<b>448 Q&amp;As – Real Questions</b>	<b>199 Q&amp;As</b>
/	<b>\$99.99</b>	<b>\$189.98</b>
/	<b>Coupon Code: BDNT2014</b>	<b>No Discoun</b>

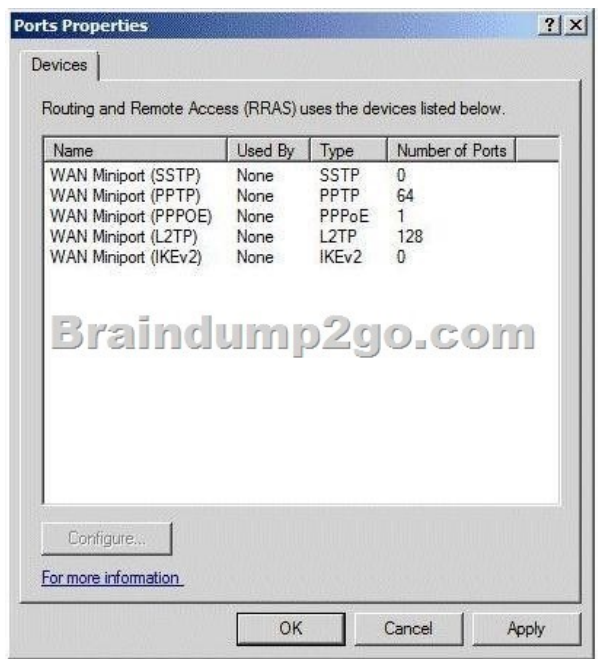
QUESTION 421 Your network contains an Active Directory domain named contoso.com. The domain contains a server named Server1 that has the Windows Server Update Services (WSUS) server role installed. You have several client computers that are not members of the domain. The client computers are currently part of the Unassigned Computers group. On the client computers, you set the WSUS target group to WSUS\_Group1, and then you run wuaclt /resetauthorization /detectnow. You discover that all of the client computers are still members of the Unassigned Computers group. You need to ensure that the client computers immediately become members of a computer group named WSUS\_Group1. What should you do? (Each correct answer presents part of the solution. Choose two.)  
 A. Create a new WSUS computer group.  
 B. On Server1, run wuaclt /resetauthorization /detectnow.  
 C. On Server1, create a new security group.  
 D. On all of the client computers, run wuaclt /resetauthorization /detectnow.  
 E. On Server1, run wsusutil /reset.  
 F. On all of the client computers, run wsusutil /reset.  
 Answer: AD  
 Explanation: Note:- By default, the WSUS server is set to use server-side targeting. If you are using client-side targeting, you need to set an option on the WSUS server.- By default, each computer is already assigned to the All Computers group. Computers will also be assigned to the Unassigned Computers group until you assign them to another group. Regardless of the group you assign a computer to, it will also remain in the All Computers group. A computer can be in only one other group in addition to the All Computers group.  
 QUESTION 422 You install Microsoft Network Monitor 3.4 on a server. You start Network Monitor and you capture data overnight. The next morning, you discover that the server responds very slowly. You open Task Manager as shown in the exhibit. (Click the Exhibit button.) You need to reduce the amount of system resources consumed on the server when Network Monitor captures network data. What should you do?



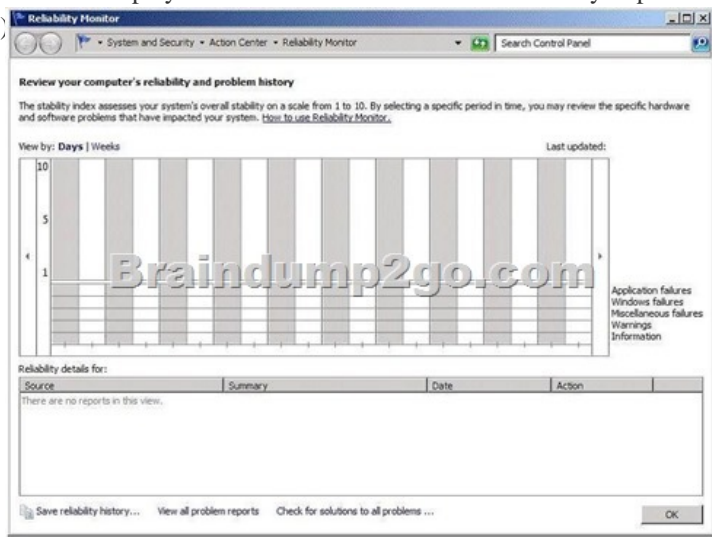
A. Use Netmon and enable pmode for the network adapter. B. Use Netmon with conversations enabled. C. Use Nmap and enable pmode for the network adapter. D. Use Nmap with conversations disabled. Answer: D QUESTION 423 Your network contains a Windows Server Update Services (WSUS) server. You need to ensure that the WSUS server automatically downloads updates for a specific Microsoft product. What should you do first? A. From the Automatic Approvals options, modify the Advanced settings. B. From the Products and Classifications options, modify the Classifications settings. C. From the Products and Classifications options, modify the Products settings. D. From the Automatic Approvals options, modify the Update Rules list. Answer: B QUESTION 424 Your network contains an Active Directory domain named contoso.com. The domain contains a DNS server named Server1. You are configuring DirectAccess. You create a static host (A) record for isatap.contoso.com. You discover that the DNS server fails to respond to queries for the isatap.contoso.com record. You need to ensure that the DNS server resolves queries for isatap.contoso.com. What should you do? A. Run `dnscmd /config /globalqueryblocklist wpa`. B. Run `dnscmd /config /enableglobalqueryblocklist 1`. C. Create a primary zone for isatap.contoso.com. D. Run `dnscmd /config /globalqueryblocklist isatap`. Answer: A Explanation: Windows 2008 DNS implements GlobalQueryBlockList, an additional security feature that includes ISATAP by default. This causes it to ignore any ISATAP.<domain name> request. Therefore, you must clear ISATAP from the list. Do this via the DNSCMD command or by making a registry entry. At a command prompt, enter `dnscmd /config /globalqueryblocklist wpa` and press Enter. This will define the GlobalQueryBlockList as only having WPAD in it (thus removing ISATAP). You also may accomplish this by going to the registry key at `HKLM:SystemCurrent Control Set\Services\DNS\Parameters`. Edit GlobalQueryBlockList and remove ISATAP. QUESTION 425 Your network contains an Active Directory domain. You deploy Network Access Protection (NAP). You need to verify whether VPN clients have antivirus software enabled. What should you configure? A. health policies B. system health validators (SHVs) C. connection request policies D. Group Policy preferences Answer: D QUESTION 426 Your network contains an Active Directory forest named contoso.com. The forest contains a DNS server named dns1.fabrikam.com that hosts a standard primary zone for fabrikam.com. dns1.fabrikam.com uses an IP address of 172.23.1.3. You run the nslookup.exe command as shown in the exhibit. (Click the Exhibit button.) You need to prevent a timeout message from appearing when you run the command. What should you do?



A. Reload the fabrikam.com zone. B. Create a reverse lookup zone. C. Run `ipconfig /registerdns` on www.fabrikam.com. D. Restart the Netlogon service on dns1.fabrikam.com. E. Change the fabrikam.com zone to an Active Directory-integrated zone. Answer: B QUESTION 427 Your network contains two Active Directory domains named contoso.com and fabrikam.com. Each domain contains several domain controllers. All of the domain controllers are configured as DNS servers for their respective domain. From a client computer in contoso.com, you discover that you cannot resolve host names in fabrikam.com. You need to ensure that the client computers in contoso.com can resolve host names in fabrikam.com. What should you do in contoso.com? A. Modify the DNS suffix search order on all of the client computers. B. Modify the DNS suffix search order on all of the DNS servers. C. Create a conditional forwarder. D. Create a GlobalNames zone. Answer: C QUESTION 428 Your network contains two servers named Server1 and Server2 that run Windows Server 2008 R2 Service Pack 1 (SP1). Server1 and Server2 have the Network Policy and Access Services (NPAS) server role installed. Server1 is configured as a VPN server. Server1 fails. You configure Server2 as a VPN server and you configure Server2 to use the external IP address of Server1. After you configure Server2, users report that they fail to connect to the network by using their PPTP-based VPN connection. You open the Ports Properties of Server2 as shown in the exhibit. (Click the Exhibit button.) You need to ensure that the users can establish PPTP-based VPN connections to Server2. What should you do?

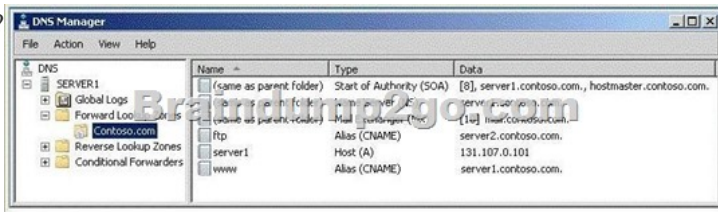


A. Configure PPTP to use remote access connections.  
 B. Change the number of ports for PPTP to 128.  
 C. Configure a static address pool for IPv4.  
 D. Create a new demand-dial interface.  
 E. Change the number of ports for IKEv2 to 128.  
 Answer: A QUESTION 429  
 Your network contains a server named Server1. You open Reliability Monitor as shown in the exhibit. (Click the Exhibit button.) You need to ensure that Reliability Monitor collects and displays information. Which two tasks should you perform? (Each correct answer presents part of the solution. Choose two.)



A. Start the System Performance Data Collector Set.  
 B. Start the System Diagnostics Data Collector Set.  
 C. Configure an event viewer subscription.  
 D. Modify the RacTask scheduled task.  
 E. Modify the HKEY\_LOCAL\_MACHINE\SOFTWARE\Microsoft\Reliability Analysis\WMI\WMIEnable registry value.  
 Answer: DE  
 Explanation: Issue: When you open Reliability Monitor on a computer that is running Windows Server 2008 or Windows Server 2008 R2, Reliability Monitor displays no information. Cause: This behavior occurs because the trigger that regularly starts the RacTask task is disabled. Information that Reliability Monitor displays is provided by the RacTask task. By default, the RacTask task runs one time that is about one hour after you install the operating system. In Windows Server 2008 and in Windows Server 2008 R2, the trigger that regularly starts the RacTask task is disabled after the RacTask task runs for the first time. Solution: To resolve this issue, follow these steps:- Click Start, type Task Scheduler in the Search box, and then click Task Scheduler. - Enable the trigger that regularly starts the RacTask task.- Update a registry setting. HKEY\_LOCAL\_MACHINE\SOFTWARE\Microsoft\Reliability Analysis\WMI\WMIEnable - Restart the computer. Note:- Reliability Monitor uses data provided by the RACAgent scheduled task. Reliability Monitor will start displaying a Stability Index rating and specific event information 24 hours after system installation. The

RACAgent scheduled task runs by default after the operating system is installed. If it is disabled, it must be enabled manually from the Task Scheduler snap-in for Microsoft Management Console (MMC). Reliability Monitor displays no information in Windows Server 2008 and in Windows Server 2008 R2. QUESTION 430 Your network contains a DNS domain named contoso.com. An administrator installs an FTP server on a server named server2.contoso.com. You open DNS Manager as shown in the exhibit. (Click the Exhibit button.) You need to ensure that users can access the FTP server by using the URL <ftp://ftp.contoso.com>. Which type of DNS record should you add?



- A. text (TXT)
  - B. well known service (WKS)
  - C. host (A)
  - D. pointer (PTR)
  - E. service location (SRV)
- Answer: C

Braindump2go Offers 100% money back guarantee on all products! Our products remain valid for a lifetime! Recently we update our 70-642 Exam Questions since the Microsoft Official Exam Center adds some new questions in 70-642 Exam Dumps. Braindump2go checks all Exam Dumps every day and guarantee all the exam questions are the latest and correct!

Compared Before Buy	
Pass4sure	1
Not In Stock	448
/	\$99
/	Cou

<http://www.braindump2go.com/70-642.html>